



TFS-STAR

Distribution | Systemlösungen | Engineering

electronics4U

Power Components

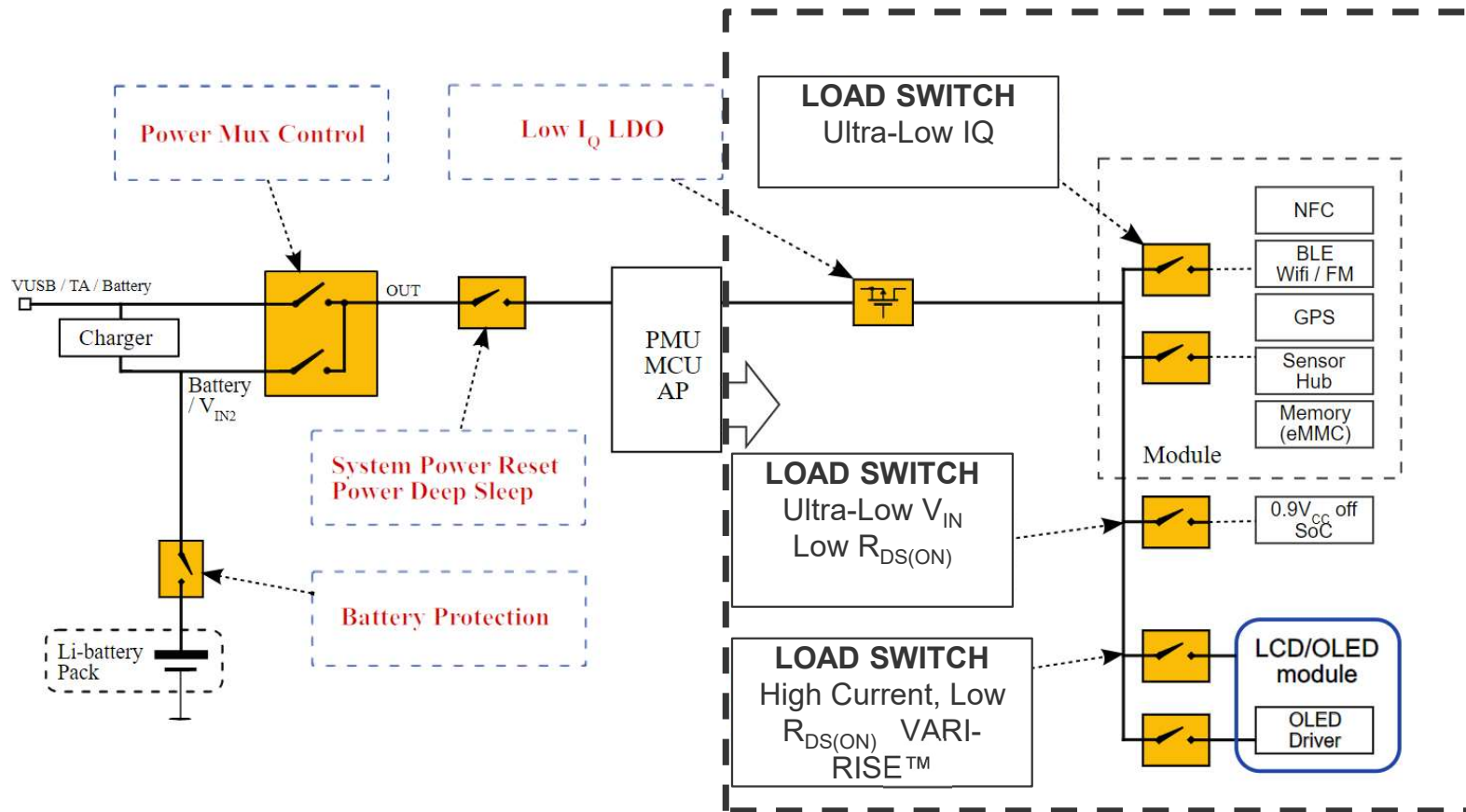


TFS-STAF

electronics4U

Integrated Power Load Switches

Nano current consumed IQ Smart™ Load Switch





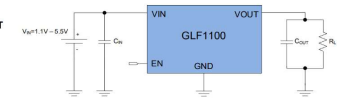
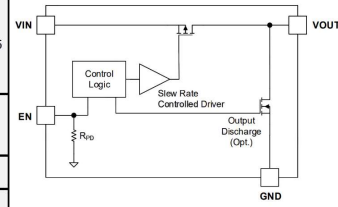
Integrated Power Load Switches

Nano current consumed IQ Smart™ Load Switch

Product Type	Product Name	V _{IN} Min. Voltage [V]	V _{IN} Max. Voltage [V]	I _{OUT} Rating [A]	R _{ON} Typ. @ V _{IN} Max [mΩ]	I _o Typ. @ V _{IN} Max [nA]	I _{so} Typ. @ V _{IN} Max [nA]	Slew Rate Control	Rise Time t _r Typ. [μs]	EN Active	Output Discharge [Ω]	Reverse Current Blocking	ESD [kV]	Operating Temperature [°C]	Package Type																																						
Nano-Current Consumption	GLF71300	1.1	5.5	2	34	1	19	✓	430	H	NA	NA	HBM : 6 CDM : 2	-40 ~ 85	CSP 0.77 x 0.77 x 0.46																																						
	GLF71301					1				H	85																																										
	GLF71301H					1				H	85																																										
	GLF71302					0.54 uA				L	NA																																										
	GLF71303					0.54 uA				L	85																																										
	GLF71306					1				H	NA																																										
	GLF71308	1	H	85																																																	
	GLF71305	1.5	5.5	2	31	3	22	✓	340	H	85			-40 ~ 85	CSP 0.97 x 0.97 x 0.55																																						
	GLF71307	1				19	H			85																																											
	GLF71310	2				7	H			NA																																											
	GLF71311	3				7	H			85																																											
	GLF71313	2				0.52 uA	L			85																																											
	GLF71315	7				H	85																																														
	GLF71511	1.1	5.5	2	25	7	28	✓	2.2 ms	H	85	-40 ~ 105	CSP 0.97 x 1.47 x 0.55																																								
	GLF71320	3				50	✓	400	H	NA																																											
	GLF71321	3				50	✓	400	H	80																																											
	GLF71322	570				40	✓	400	L	NA																																											
	GLF71323	570				40	✓	400	L	80																																											
	GLF71325	4				18 @ 3.3 V	1 @ 3.3 V	16 @ 3.3 V	✓	2.2 ms	H			85																																							
	GLF71301T	1.5	5.5	2	34	1	19	✓	430	H	85	-40 ~ 85	CSP 0.77 x 0.77 x 0.35 CSP 0.97 x 0.97 x 0.35																																								
	GLF71311T	2				31	7	28	✓	335	H			85																																							
	GLF1100	2				82	5	25	✓	2.2 ms	H			85																																							
	GLF1110	2				54	2	13	✓	600	H			NA																																							
	GLF1111	2				54	2	13	✓	600	H			85																																							
	GLF1110H	1.5				5.5	2	54	2	13	✓			600	H	NA	-40 ~ 105	SOT23-5L																																			
	GLF1111H	2	54	2	13				✓	600	H	85																																									
	GLF81311	2	6.5	3	41				10	20	✓	2.3 ms	H	560	-40 ~ 85	CSP 0.67 x 0.67 x 0.425																																					
	GLF1120H	1.1	5.5	1	52				5	10	✓	380	H	NA																																							
GLF1121H	5	✓							H		85																																										
GLF1121HN	5	✓							H		85																																										
GLF1121L	550	✓				L	85																																														
GLF1123H	5	✓				H	85																																														
Prog. Long t _r of V _{OUT}	GLF71430	1.5				5.5	7	10	10		10		Prog.	up to 34 ms	H	NA	NA	HBM : 8 CDM : 2	-40 ~ 85	CSP 1.27 x 1.67 x 0.55																																	
	GLF71431	1.5	5.5	7	10	10	55	Prog.	up to 34 ms	H	85	2-Channel	GLF1411	1.5	5.5	1					180	10	32	✓	390 @ SR= High 45 @ SR= GND	H	95	NA	HBM : 5 CDM : 2	-40 ~ 85	DFN 1.5 x 1.5 -8L	GLF1421	1.5	5.5	1	175	440	20	✓	465 @ SR= High 50 @ SR= GND	H	95	3-Channel	GLF78131 / T	1.1	5.5	1.5	60	6	23	✓	500	H
2-Channel	GLF1411	1.5	5.5	1	180	10	32	✓	390 @ SR= High 45 @ SR= GND	H	95		NA	HBM : 5 CDM : 2	-40 ~ 85	DFN 1.5 x 1.5 -8L																																					
	GLF1421	1.5	5.5	1	175	440	20	✓	465 @ SR= High 50 @ SR= GND	H	95	3-Channel					GLF78131 / T	1.1	5.5	1.5	60	6	23	✓	500	H	235	NA	HBM : 6 CDM : 2	-40 ~ 85	CSP 1.27 x 1.67 x 0.55/ 0.35 T																						
3-Channel	GLF78131 / T	1.1	5.5	1.5	60	6	23	✓	500	H	235	NA	HBM : 6 CDM : 2	-40 ~ 85	CSP 1.27 x 1.67 x 0.55/ 0.35 T																																						

- Ultra-low off-state leakage
- Ultra-low on-state resistance
- Ultra-low on-state power
- Active High / Active Low Types w/o reverse current blocking
- Fixed / Adj. slew rate control
- Single- / Dual / Triple Output Version

Evalboards available on request





Integrated Power Load Switches

Nano current consumed IQ Smart™ Load Switch

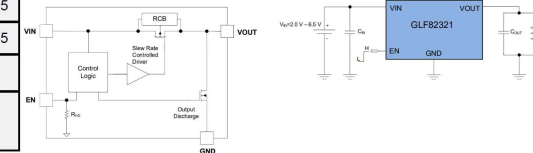
Product Type	Product Name	V _{IN} Min. Voltage [V]	V _{IN} Max. Voltage [V]	I _{OUT} Rating [A]	R _{ON} Typ. @ V _{IN} Max [mΩ]	I _Q Typ. @ V _{IN} Max [nA]	ISD Typ. @ V _{IN} Max [nA]	Slew Rate Control	Rise Time t _r Typ. [μs]	EN Active	Output Discharge [Ω]	Reverse Current Blocking	ESD [kV]	Operating Temperature [°C]	Package Type	
True Reverse Current Blocking	GLF72100	1.5	5.5	2	37	0.45 uA	20	✓	570	H	NA	✓	HBM : 4 CDM : 2	-40 ~ 85	CSP 0.77 x 0.77 x 0.46	
	GLF72101			2	37	0.45 uA	20	✓	570	H	85					
	GLF72102*			2	37	0.45 uA	20	✓	570	L	NA					
	GLF72103			2	37	0.45 uA	20	✓	48	H	85					
	GLF72105			2	37	0.45 uA	20	✓	570	L	85					
	GLF72110			3	29	1.4 uA	24	✓	1.2 ms	H	NA					
	GLF72111			3	29	1.4 uA	24	✓	1.2 ms	H	85					
	GLF72112			3	29	1.4 uA	24	✓	18 us	H	NA					
	GLF72120			4	14	1.3 uA	56	✓	730	H	NA					
	GLF72122			4	14	1.3 uA	56	✓	2000	H	NA					
	GLF1200			2	54	0.47 uA	13	✓	600	H	NA					
	GLF1201			2	54	0.47 uA	13	✓	600	H	85					
	GLF1200H			2	54	0.47 uA	13	✓	600	H	NA					
	GLF1201H			2	54	0.47 uA	13	✓	600	H	85					
	GLF82321	2	6.5	2	40	1.6 uA	20	✓	2.6 ms	H	550	✓	HBM : 6 CDM : 2	-40 ~ 85	SOT23-5L	
	GLF1220H	1.5	5.5	1	52	500	10	✓	390	H	NA				HBM : 3 CDM : 2	CSP 0.67 x 0.67 x 0.425
	GLF1221H	1.5		1	52	500	10	✓	390	H	85				HBM : 3 CDM : 2	CSP 0.67 x 0.67 x 0.425
Ultra-Low V _{IN}	GLF72510	0.8	3.6	3	27	80 nA @ 1.2 V 15 uA @ 3.6 V	6	✓	420	H	NA	✓**	HBM : 6 CDM : 2	-40 ~ 85	NA	
	GLF72511			3	27	80 nA @ 1.2 V 15 uA @ 3.6 V	6	✓	420	H	85				NA	
	GLF72501			2	32	180 nA @ 1 V	630	✓	390	H	85				NA	
	GLF72520			4	10	60 nA @ 0.8 V 6.5 uA @ 3.6 V	6.5	✓	800	H	NA				NA	
	GLF72524	4	10	60 nA @ 0.8 V 6.5 uA @ 3.6 V	6.5	✓	280	H	85	NA						
	GLF1501	0.85	3	52	50 nA @ 0.85 V 30 uA @ 3.6 V	6	✓	400	H	85	NA				HBM : 4 CDM : 2	SOT23-5L
	GLF72525	0.7	4	9	5.6 uA @ 0.7 V 8.8 uA @ 3.6 V	14	✓	82	H	85	NA				HBM : 8 CDM : 2	CSP 0.97 x 1.47 x 0.55
	GLF1511	0.7	5.5	4	13	2 uA @ 0.7 V 30 uA @ 5.5 V	30	✓	360	H	250				✓**	HBM : 2 CDM : 1
Ultra-Low V _{IN} (2-channel)	GLF1531	0.8	5.5	2	33	14 uA	13	✓	2.83 ms	H	21	✓**	HBM : 2 CDM : 1	-40 ~ 105	SOT23-6L	
	GLF1401	0.6	5.5	6	19	18 uA @ dual channel 15 uA @ single channel	8	✓	1.97ms	H	200	NA	HBM : 4 CDM : 2	-40 ~ 85	DFN 2 x 3 -14L	
	GLF1403	0.6	5.5	6	19	18 uA @ dual channel 15 uA @ single channel	8	✓	1.00ms	H	200	NA	HBM : 4 CDM : 2	-40 ~ 85	DFN 2 x 3 -14L	

*: On Request

** : Reverse Current Blocking Protection When Disabled

- Ultra-low off-state leakage
- Ultra-low on-state resistance
- Ultra-low on-state power
- **Ultra-low V_{IN} Types**
- Active High / Active Low Types
- w/o reverse current blocking / **True reverse current blocking (TRCB)**
- Fixed / Adj. slew rate control
- Single- / Dual Output Version

Evalboards available on request

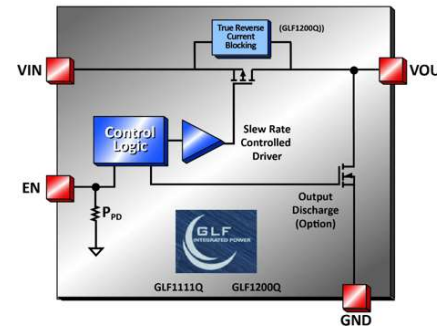




Automotive Grade Power Load Switches

I_Q-Smart™ Load Switches with AEC-Q

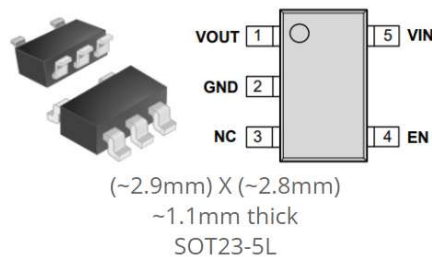
- AEC-Q100 qualified (Grade 1: -40°C to +125°C)
- Low leakage current
- Integrated slew rate control
- Ultra-Low I_Q
- Ultra-Low I_{SD}



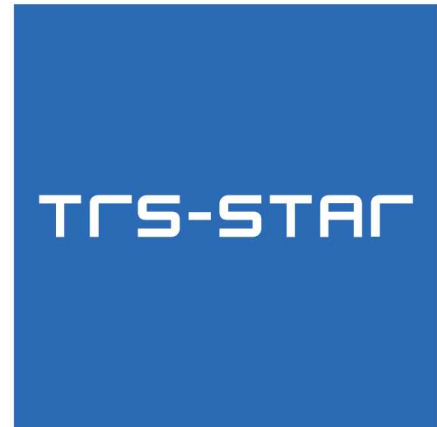
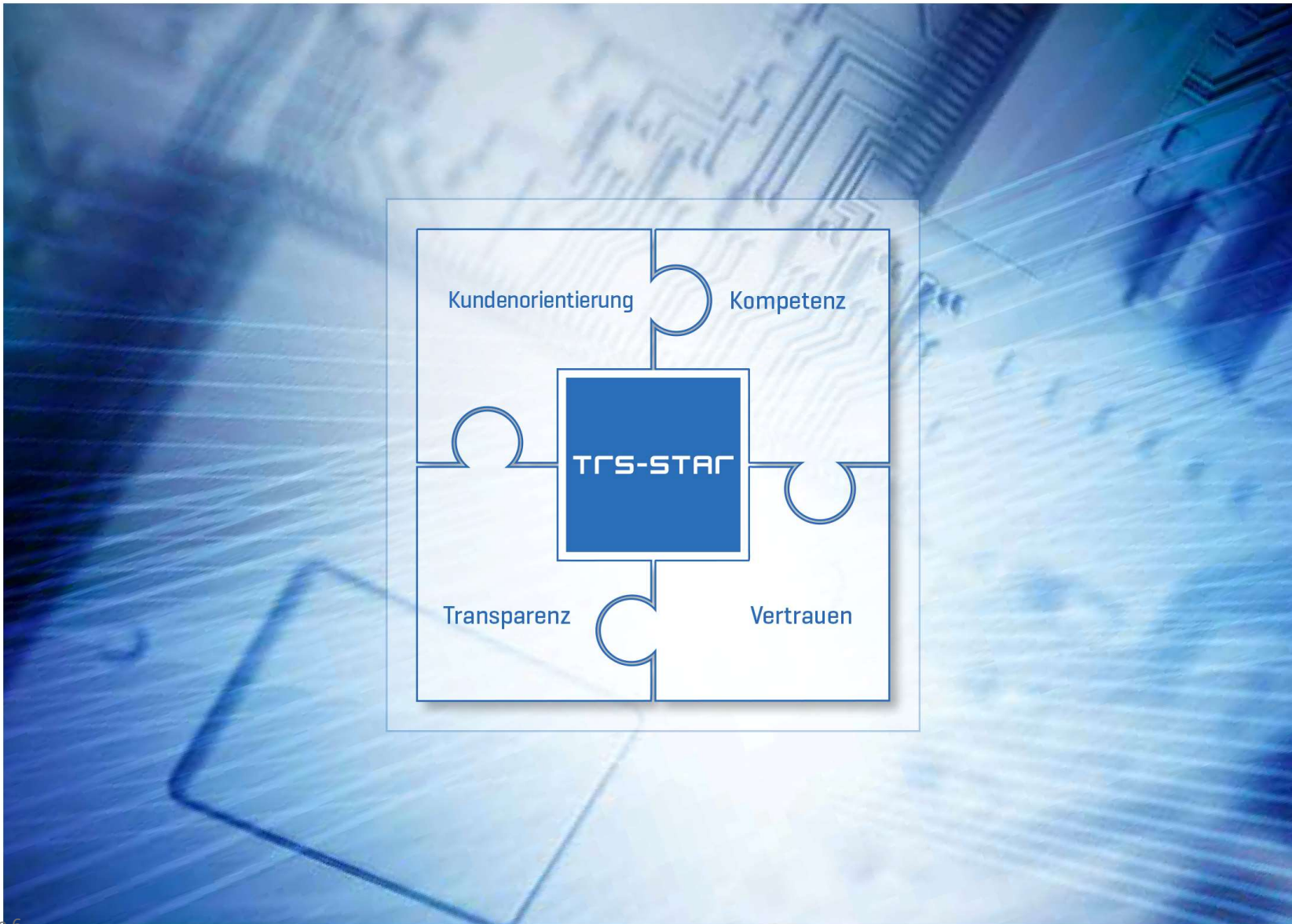
Product Type	Product Name	V _{IN} Min. Voltage [V]	V _{IN} Max. Voltage [V]	I _{OUT} Rating [A]	R _{ON} Typ. @ V _{IN} Max [mΩ]	I _Q Typ. @ V _{IN} Max [nA]	I _{SD} Typ. @ V _{IN} Max [nA]	Slew Rate Control	Rise Time t _r Typ. [us]	EN Active	Output Discharge [Ω]	Reverse Current Blocking	ESD [kV]	Operating Temperature [°C]	Package Type
Nano-Current Consumption	GLF1111Q	1.5	5.5	2	60	2	13	✓	400	H	85	NA	HBM : 4 CDM : 2	- 40 ~ 125	SOT23-5L
	GLF1110Q	1.5	5.5	2	60	2	13	✓	400	H	NA	NA			SOT23-5L
True Reverse Current Blocking	GLF1200Q	1.5	5.5	2	60	480	25	✓	600	H	NA	✓			SOT23-5L
	GLF1201Q	1.5	5.5	2	60	480	25	✓	600	H	85	✓			SOT23-5L

Application:

- Infotainment / Cockpit / Dashboard Application
- Cluster Displays
- Onboard Diagnostics
- Vehicle Entry Control
- External Accessories



Evalboards available on request



electronics4U

www.trs-star.com

Hauptsitz Stutensee

Werner-von-Siemens-Str. 1
D-76297 Stutensee
T +49 7249 95222-0
Info@trs-star.com

Niederlassung Frankenthal

Schraderstraße 44
D-67227 Frankenthal
T +49 6233 347-0
Info@trs-star.com