



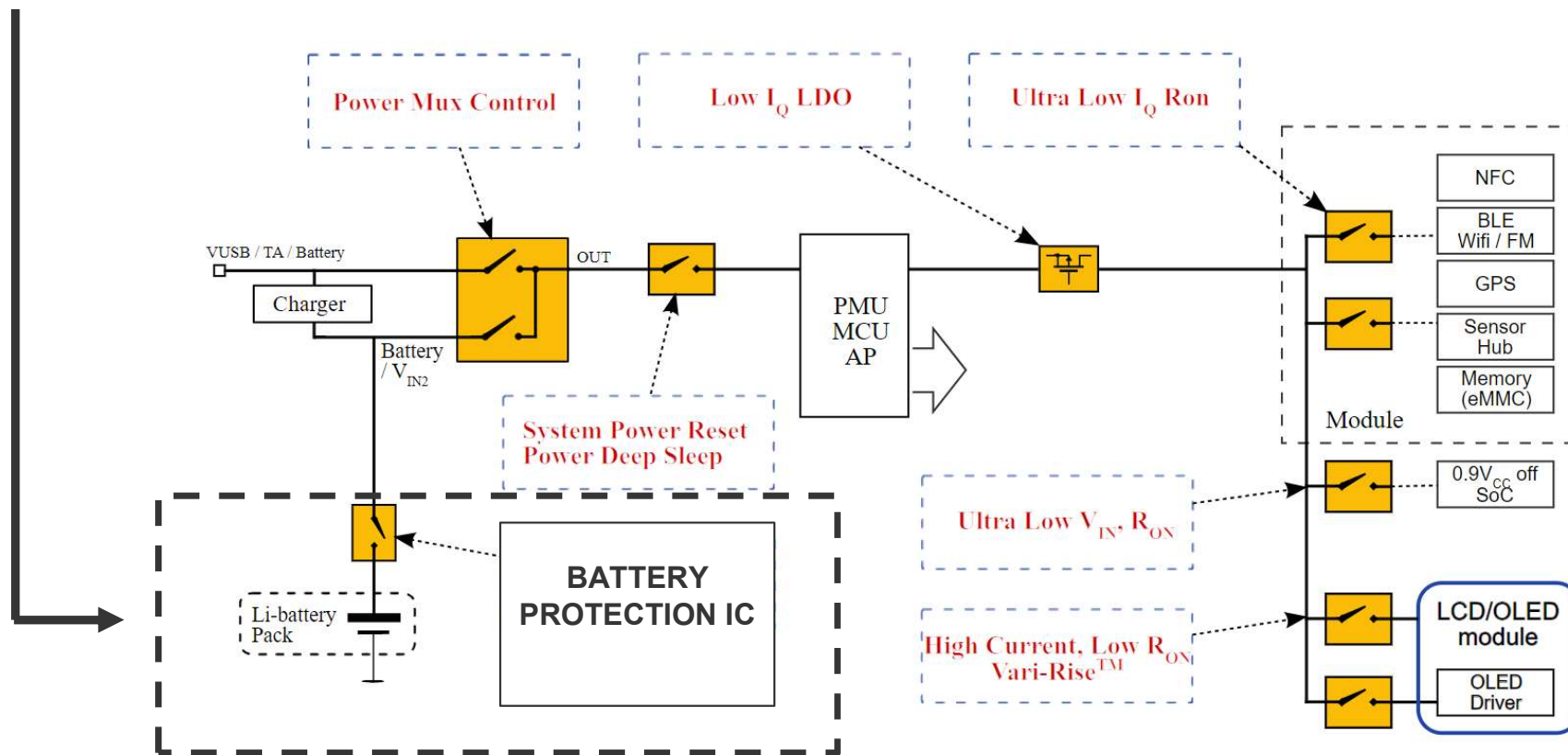
TFS-STAR

Distribution | Systemlösungen | Engineering

electronics4U



Battery Protection IC

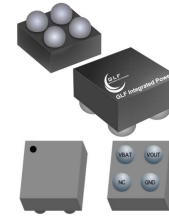
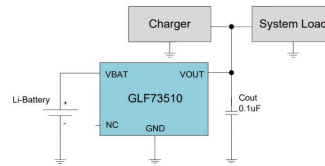




Battery Protection IC

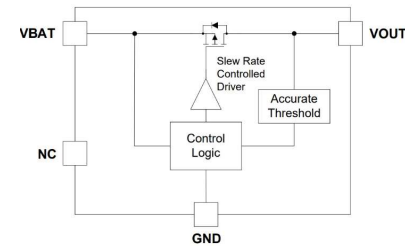
Nano-current consumed IQ Smart™ Battery Protection Switch

- Different V_{TH} -Levels on request
- Ultra-Low I_Q
- Ultra-Low $R_{DS(on)}$
- Ultra-Low I_{SD}
- Small Size 0.97mm x 0.97mm



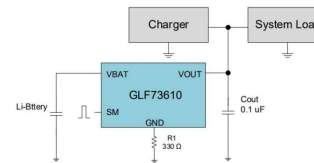
Product Type	Product Name	V _{IN} Max. Voltage [V]	I _{OUT} Rating [A]	R _{ON} Typ. @ 4.2 V [mΩ]	R _{ON} Typ. @ 3.6 V [mΩ]	I _Q Typ. @ 4.2 V [μA]	I _Q Typ. @ 3.6 V [μA]	I _{SD} Typ. @ 2.5 V [nA]	Over Charge Protection V _{OC} [V]	Over Discharge Protection, V _{OD} [V]	Short Circuit Protection I _{SC} [A]	ON Voltage to V _{OUT} , V _{ON} [V]	V _{BAT} Min Charging [V]	Operating Temperature [°C]	Package Type
Battery Protection	GLF73510	5.5	2	28	30	0.73	0.51	2	NA	3.05	NA	3.5	0.4	-40 ~ 85	CSP 0.97 x 0.97 x 0.55
	GLF73710		1.5	30	31	0.70	0.65	35	NA	2.88	0.55	3.6			
	GLF73910-AD01		1.5	34	36	0.79	0.72	70	4.35	2.8	0.6	3.6			
	GLF73910-AD01C		1.5	34	36	0.79	0.72	70	4.35	2.8	0.6	3.6	0		
	GLF73910-BD01		1.5	34	36	0.79	0.72	70	4.50	2.8	0.6	3.6			
	GLF73911-AD01		1.5	34	36	0.79	0.72	35	4.35**	2.8	0.6	3.6			
	GLF73912		1.5	53	57	1	0.9	7	4.35	2.8	0.5	3.6	0.4		

Note) **: Monitor V_{OUT} to release V_{OC}.



Nano-current consumed IQ Smart™ Battery Protection Switch w. full protection

- Over-charge / Overdischarge Control
- Short Circuit Protection
- Shipping Mode Feature
- Reverse Polarity Protection

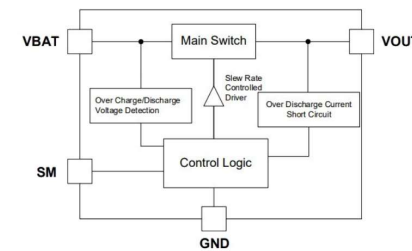


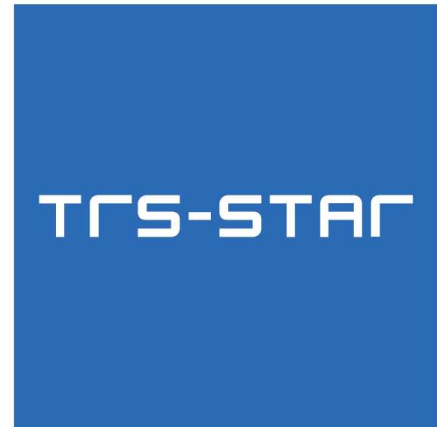
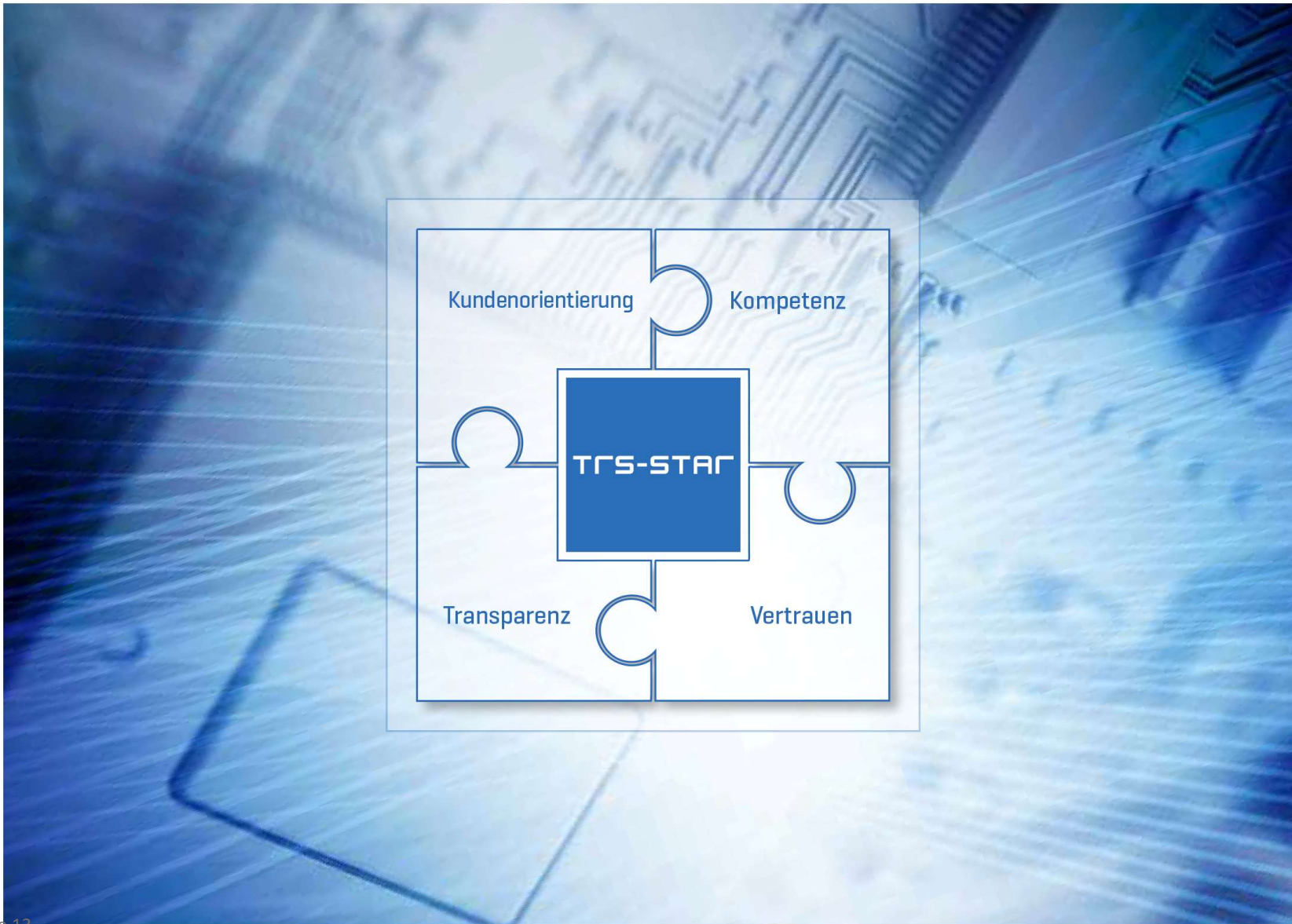
Evalboards available on request

Product Type	Product Name	I _{OUT} Rating [A]	R _{ON} Typ. @ 4.2 V [mΩ]	I _Q Typ. @ 3.6 V [μA]	I _{SD} Typ. @ 2.5 V [nA]	Over Charge Protection V _{OC} [V]	Over Discharge Protection, V _{OD} [V]	Over Charge Current I _{OC} [mA]	Over Discharge Current I _{OD} [mA]	Short Circuit Protection I _{SC} [mA]	ON Voltage to V _{OUT} , V _{ON} [V]	Shipping Mode	V _{BAT} Min Charging [V]	Operating Temperature [°C]	Package Type
Battery Protection with Shipping Mode	GLF73915-AD12C	1.5	53	0.9	7	4.35	2.8	300	NA	500	3.6	✓	0	-40 ~ 85	CSP 0.97 x 0.97 x 0.55
Full Protection	GLF73610-CE23C	1.5	62 @ 3.7 V	1.48 @ 3.7 V	8	4.45	2.8	330	76	250	3.6	✓	0	-40 ~ 85	CSP 0.97 x 0.97 x 0.55
	GLF73610-DE23C					4.275									
	GLF73610-EE23C**					4.375									
	GLF73610-FE23C**					4.425									
	GLF73610-GE23C					4.475									
	GLF73610-HE23C					4.525									

*: In Dev.

** : On Request





electronics4U

www.trs-star.com

Hauptsitz Stutensee

Werner-von-Siemens-Str. 1
D-76297 Stutensee
T +49 7249 95222-0
Info@trs-star.com

Niederlassung Frankenthal

Schraderstraße 44
D-67227 Frankenthal
T +49 6233 347-0
Info@trs-star.com