



TFS-STAR

Distribution | Systemlösungen | Engineering

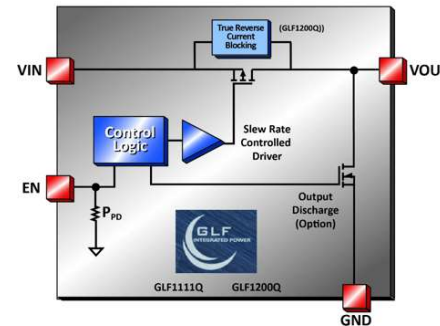
electronics4U



Automotive Grade Power Load Switches

I_Q-Smart™ Load Switches with AEC-Q

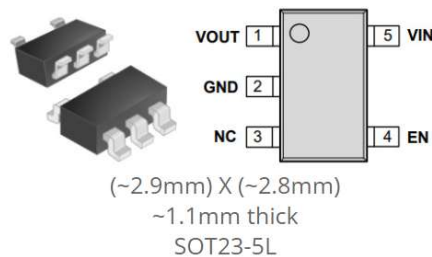
- AEC-Q100 qualified (Grade 1: -40°C to +125°C)
- Low leakage current
- Integrated slew rate control
- Ultra-Low I_Q
- Ultra-Low I_{SD}



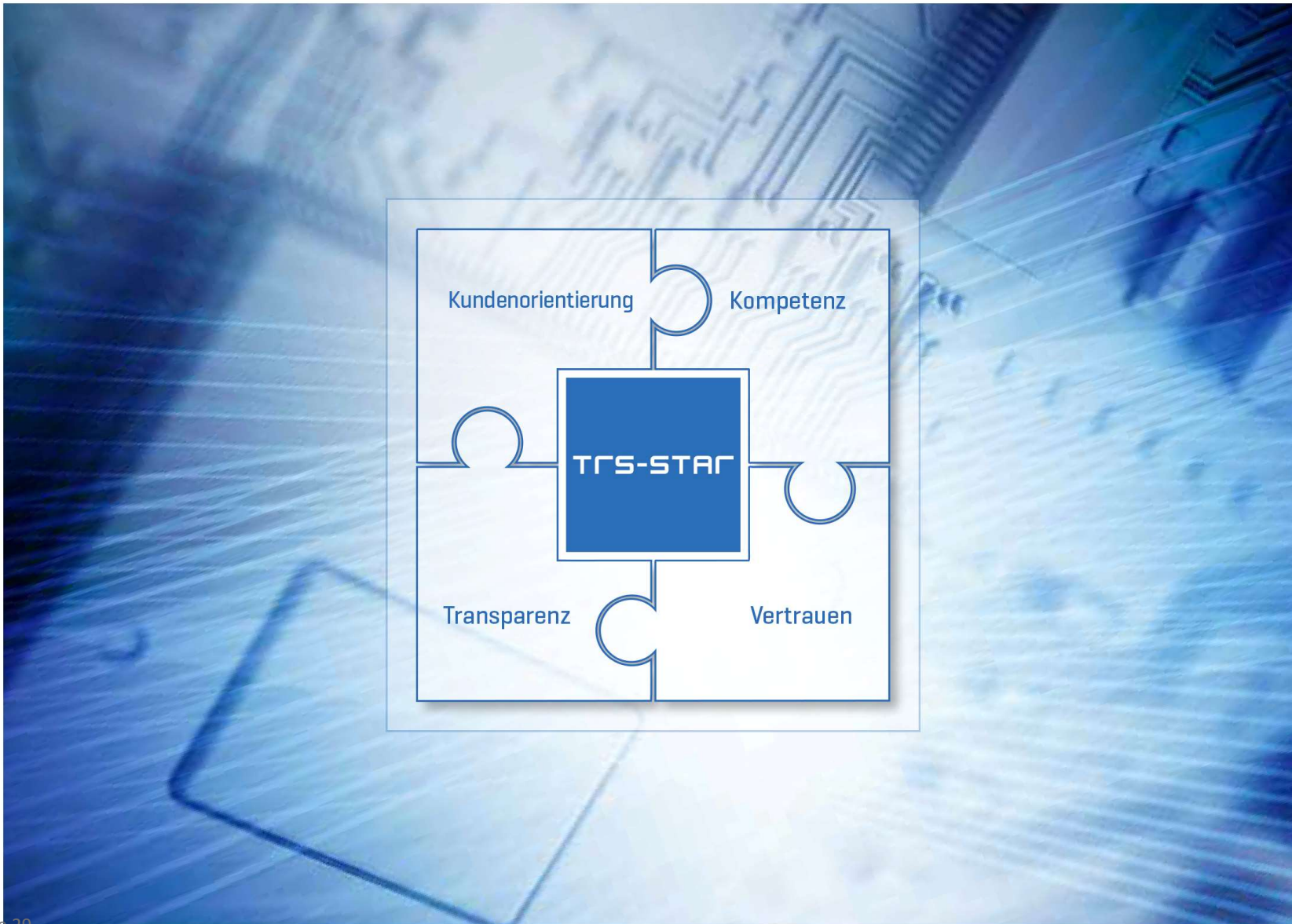
Product Type	Product Name	V _{IN} Min. Voltage [V]	V _{IN} Max. Voltage [V]	I _{OUT} Rating [A]	R _{ON} Typ. @ V _{IN} Max [mΩ]	I _Q Typ. @ V _{IN} Max [nA]	I _{SD} Typ. @ V _{IN} Max [nA]	Slew Rate Control	Rise Time t _r Typ. [μs]	EN Active	Output Discharge [Ω]	Reverse Current Blocking	ESD [kV]	Operating Temperature [°C]	Package Type		
Nano-Current Consumption	GLF1111Q	1.5	5.5	2	60	2	13	✓	400	H	85	NA	HBM : 4 CDM : 2	- 40 ~ 125	SOT23-5L		
	GLF1110Q	1.5	5.5	2	60	2	13	✓	400	H	NA	NA			SOT23-5L		
True Reverse Current Blocking	GLF1200Q	1.5	5.5	2	60	480	25	✓	600	H	NA	✓			HBM : 4 CDM : 2	- 40 ~ 125	SOT23-5L
	GLF1201Q	1.5	5.5	2	60	480	25	✓	600	H	85	✓					SOT23-5L

Application:

- Infotainment / Cockpit / Dashboard Application
- Cluster Displays
- Onboard Diagnostics
- Vehicle Entry Control
- External Accessories



Evalboards available on request



electronics4U

www.trs-star.com

Hauptsitz Stutensee

Werner-von-Siemens-Str. 1
D-76297 Stutensee
T +49 7249 95222-0
Info@trs-star.com

Niederlassung Frankenthal

Schraderstraße 44
D-67227 Frankenthal
T +49 6233 347-0
Info@trs-star.com