

EVERLIGHT ELECTRONICS CO., LTD

2024 COMPANY PROFILE

www.everlight.com

EVERLIGHT



Agenda





01 | ABOUT
EVERLIGHT

A pioneer company in the LED industry



Founded	1983
IPO	1997
Business Focus	Design, Manufacture & Marketing of Optoelectronics Components and Modules
Headquarters	New Taipei City, Taiwan
Employees	Approx. 6,000 globally
Plants	Tu-Cheng (Taiwan) · Miao-Li (Taiwan) Tong-Luo(Taiwan) Su-Zhou (China) · Zhong-Shan (China)

Over the last 40 years, EVERLIGHT has integrated professional R&D, sales and marketing teams to provide global customers with all-round LED solutions steadfastly. Today, EVERLIGHT plays a significant role in the global LED industry.

Upholding the spirit of “**strive, onward and never let up**”, the EVERLIGHT team has been offering high-quality and high-competitive products and services to our customers to support them through changes and challenges of the industry over the decades. And we will continue to do so to head toward a win-win future.



Our Capacities



Su-Zhou



Zhong-Shan



Tu-Cheng,
Taipei



Yuan-Li, Miaoli



Tong-Luo,
Miaoli



Headquarters
Shulin, Taipei

7,601
KK
Average Monthly
Capacity Currently

	(KK)
SMD	5,500
INFRARED	1,765
LAMP	260
DISPLAY	26
OTHERS	50

EVERLIGHT History

1983 - 1994

1983

Company established and started MP of LEDs.

1984

Infrared Emitters and Photosensitive Detector Production.



1989

Yuan-Li Plant(Miao-Li, Taiwan) established.

1990

Japanese Opto OEM-Sharp selected EVERLIGHT as manufacturing partner in LEDs.

1991

Headquarters and Plant in Tu-Cheng of Taipei

1995

1996

1997

1998

1999

2001

1995 - 2002

ISO 9002 Certified
ISO 9001 Certified



Launched a completed and diversified line of SMD LEDs



IPO in TSE.

QS 9000 Certified
ISO 14001 Certified

Suzhou Plant in China established

EVERLIGHT History

2003 - 2011

2003

Obtained SONY's certification for "Green Company of Environment Protection".

2004
|
2005

Pb Free Compliance
RoHS Compliance
TS - 16949 Certified



2010

Zhong-Shan Plant established.
New Suzhou Plant III in China established

2011

EVERLIGHT Global Headquarter Established in Shulin District, New Taipei City, Taiwan.



2011
|
2012

2013

2017

2021

2022

2011 - 2021

QS 9000 Certified
ISO 14001 Certified

EVERLIGHT's laboratory received the highest standard recognition by Environmental Protection Agency (EPA) Recognition and allowed to make LM-80 report by us.



Tongluo Plant in Taiwan established

EVERLIGHT won the 2021 HR Asia Award
EVERLIGHT won the 15th 2021 Asia-Pacific Enterprise Awards

ISO 27001 Certified


Quality Statement / Certifications

To establish a green supply chain that exceeds customer demands through high quality products coupled with effective customer services.



Certificates

- ✓ ISO 9001
- ✓ ISO 14001
- ✓ ISO 17025
- ✓ ISO 45001
- ✓ ISO 50001
- ✓ IATF16949
- ✓ QC 080000
- ✓ ESD 20.20



Environment Protection

- ✓ Sony Green Partner
- ✓ Pb Free
- ✓ RoHS Compliance
- ✓ REACH Compliance



Corporate Social Responsibility

- ✓ SA 8000
- ✓ ESG
- ✓ SDGs
- ✓ CSV



Information Security

- ✓ ISO 27001

Global Network



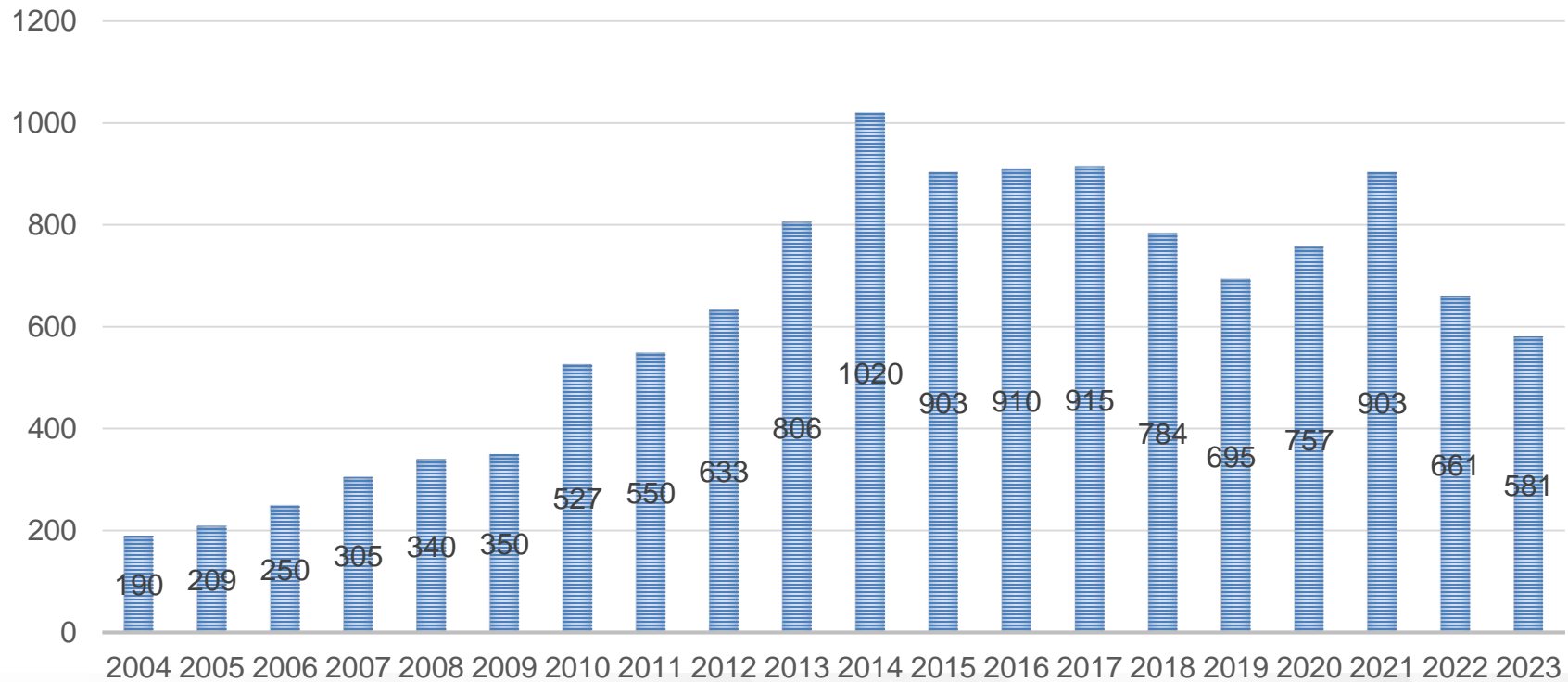
Branch offices in Asia

Taiwan	Shenzhen	Singapore	Korea
Suzhou	Guangzhou	Malaysia	Japan
Tianjin	Hong Kong	India	



Revenue

(Million USD)



Startup Stage	Growth and Establishment Stage	Maturity Stage	Transformation Stage
Plant establishment/ expansion	Backlight and Lighting	Demonstration of full-range products	Infrared and Automotive

Market share estimates for 2023 (World)

For optoelectronic components

排名	公司名稱	總部所在地	占比
1	Nichia 	Japan	11.2%
2	ams Osram 	Germany	8.3%
3	Seoul Semiconductor 	South Korea	5.2%
4	Lumileds 	United States	4.7%
5	Samsung Electronics 	South Korea	4.7%
6	MLS 	China	4.2%
7	Everlight 	Taiwan	4.1%
8	Lite-ON 	Taiwan	3.9%
9	Broadcom 	United States	3.9%
10	Nationstar 	China	2.4%

Source : Omdia 2022

Business Philosophy – ELITE

From the basis of integrity, quality and innovation. EVERLIGHT implements every customer's demands in order to achieve excellent performance for each of our customers.



EXCELLENCE

卓越

Excelling in professionalism with outstanding results and breakthroughs in company and employee improvement.



LED INNOVATION

創新

Exploring new ways of thinking and working, inventing innovative solutions while creating value.



INTEGRITY

誠信

Being ethically unyielding and honest, matching our behaviors to our words and taking responsibility for our promise



TOP QUALITY

品質

Providing the most optimal and best quality solutions through consistent and continuous improvement.



EXECUTION

執行

Setting High performance goals, believing in our mission and taking accountability with courage.

Our Spirit

同心協力

Strive

勇往直前

Onward

奮戰不懈

Never Let Up





02 | PRODUCT

EVERLIGHT 【One Source For Every Need】



ABU
Automotive



OBU
Opto-electronic



Semi
Power Device



LCBU
Lighting Component



VBU
Visible



TFT (Backlight)
Thin Film Transistor Backlight

A large teal circle with a gradient from light to dark teal, centered on the page. It contains the text '03 | VISION & MISSION'.

03 | VISION & MISSION

Environment Social Governance



【SDGs】 Sustainable Development Goals

The Sustainable Development Goals or Global Goals are a collection of 17 interlinked global goals designed to be a "blueprint to achieve a better and more sustainable future for all". The SDGs were set up in 2015 by the United Nations General Assembly and are intended to be achieved by the year 2030.



Pioneer of LED -

Chairman of EVERLIGHT Group

Robert Yeh

- ✓ The pioneer of Taiwan's LED industry
- ✓ Established Everlight Electronics Co., Ltd. in 1983
- ✓ Was awarded the Honorary Doctorate of National Taipei University of Technology and established Everlight Building in 2011
- ✓ Founder of Epistar



同心協力
Strive

勇往直前
Onward

奮戰不懈
Never Let Up

EVERLIGHT Cultural Foundation – Backstage planner, **Professor Susie Chien**

Oriented to the spirit of “Taken from society Give back to society”

Participated in **155**
charitable activities in
2023

Cultural and
artistic
activities/
concerts

Charitable
and
donation
activities

Enhancing
humanistic
education



2023 Family concert, “Alice
in Wonderland” – Firefly
love



3rd “EVERLIGHT Cup”
table tennis tournament



Organ donation
appreciation concert at
NTU Hospital – Wal with
Love



2023 Christmas Lighting
and Prayer Ceremony at
Chinese Culture
University

CSR-Employee Benefit

EVERLIGHT cares our environment and employees' health! We often participate the charity activities and hold the sports game in order to contribute to our environment and increase all employees and their families' health.



Corporate coastal clean-up campaign



Blood donation activity



Health facilitation activity



Table tennis tournament



Everlight Cup basketball bullfighting competition



Domino Tournament



Annual health check



The CHR (Corporate Health Responsibility) Award – Bronze Award



EVERLIGHT's Four Core Competences

- ✓ Has a better customer satisfaction level comparing with other industry players
- ✓ Customer care
- ✓ Customer services

01

Customer Upmost

- ✓ Honesty and integrity
- ✓ Abide by rules
- ✓ A brand with long history

02

Corporate Governance

Focus on R&D

04

- ✓ Obtained 2,470 patents
- ✓ Short product development cycle
- ✓ Fast sample delivery
- ✓ Immediate feedback

One-stop Purchasing

03

- ✓ A complete product portfolio
- ✓ Flexible delivery
- ✓ Stable supply

億光電子
EVERLIGHT



THANK YOU !
EVERLIGHT
— One Source For Every Need —

此頁後的頁面為產品介紹超連結頁面

OBU Product Family

All-round solutions

SENSOR

IRM



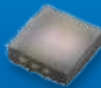
APM



ALS



CLS



IR PD&PT

SMD Lamp



ITR



Multi-Chip



High Power



Coupler

Standard



High speed



TRIAC



SSR

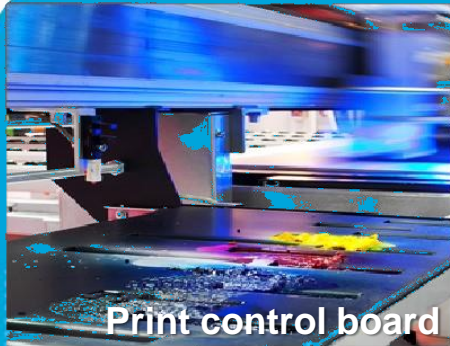


IGBT gate driver



OBU

Product Application



Print control board



Smartphone

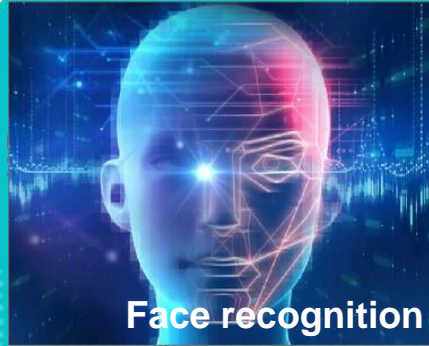


Smart Home

New



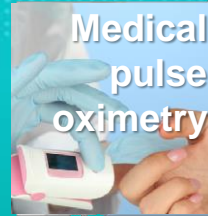
Charging pile



Face recognition



Smart Wearable

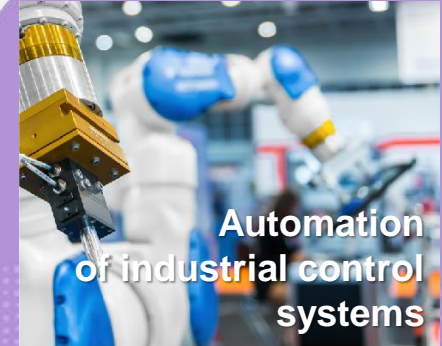


Medical pulse oximetry

New



Photovoltaic energy storage system



Automation of industrial control systems



Smart Meter



Home appliance control

New



Server

TFT (Backlight) Product Family



SIDE VIEW LED



EDGE TYPE LED



DIRECT TYPE LED

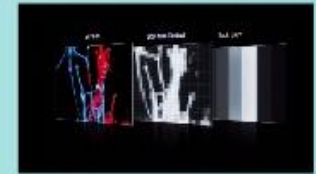


Automotive Backlight

new

**LOCAL
DIMMING**

**Mini
LED**



Automotive Exterior Product

ALFS



EL2820



XI3030



PLCC



EL3735



CH1210



CH2924



A09K



Exterior Application
Automotive



Automotive Interior Product

Oil Change Due

SMART RGB



RGB



Multi Color



1608



2214



Mini top view



Top view



Side view



Interior Application
Automotive



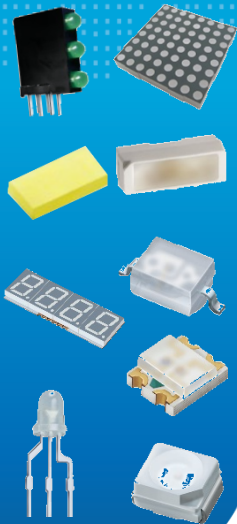
VBU Product Family

All-round solutions



CCBU

Array
CSP
Display
Lamp
Matrix
RGB+IC
SMD A
SMD B
SMD C



Flash

Ceramics
CSP
PCT



Signage

Lamp
SMD B
SMD C



VBU - CCBU

Product Application



▲ Home Appliances



▲ Gaming keyboard and peripherals



▲ Smart Home



▲ Entertainment electronics industry

VBU - Flash

Product Application



▲ Mobile phone and tablet flash



▲ Scanner light of barcode reader



▲ Light of flashlight



▲ IP Camera/Network Camera

VBU - Signage - Indoor

Product Application



▲ Large-size screen for broadcast studio



Accomplishments: Haikang's Nanjiang City Government Hall

▲ Screen used in a hall or at a commercial exhibition



Accomplishments: Haikang's Nanjiang Shenzhen Longgang Smart Center

(Public Organizations)

▲ Large-size screen for monitoring center



▲ Movie theater screen

VBU - Signage (Outdoor)

Product Application



▲ Giant screen for sports stadium



▲ Giant outdoor screen for shopping mall



▲ Indicator light on the platform of railway stations

LCBU - Lighting

Product Family



High Power Series

1-3W 3535
Shwo F



4-50W COB



1-2W Filament



Low Power (0.2W-0.5W) Series

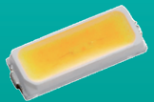
PCT5630/
EMC3030



PPA/
PCT2835



PPA/
PCT4014



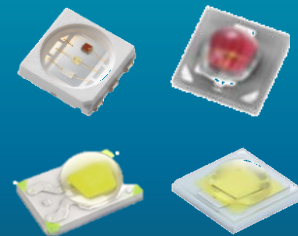
Mid Power Series(1W)

EMC3030
PCT2835



Professional Entertainment Lighting

5050/6060 RGBW
Car warning light
ELSH/ELSW Series
62/67 Series



LCBU - UVC

Product Family

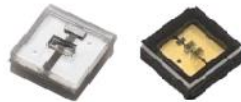


Power(W)

High power
>20mW

Mid power
2~10mW

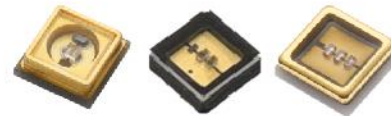
Low power
<2mW



New rubber version

Combat Version

Market share



Quartz glass version

UV 3535

- ★ Home Appliance
- ★ Air purification
- ★ Air-conditioner purification
- ★ Consumer product



New rubber version
Quartz glass version

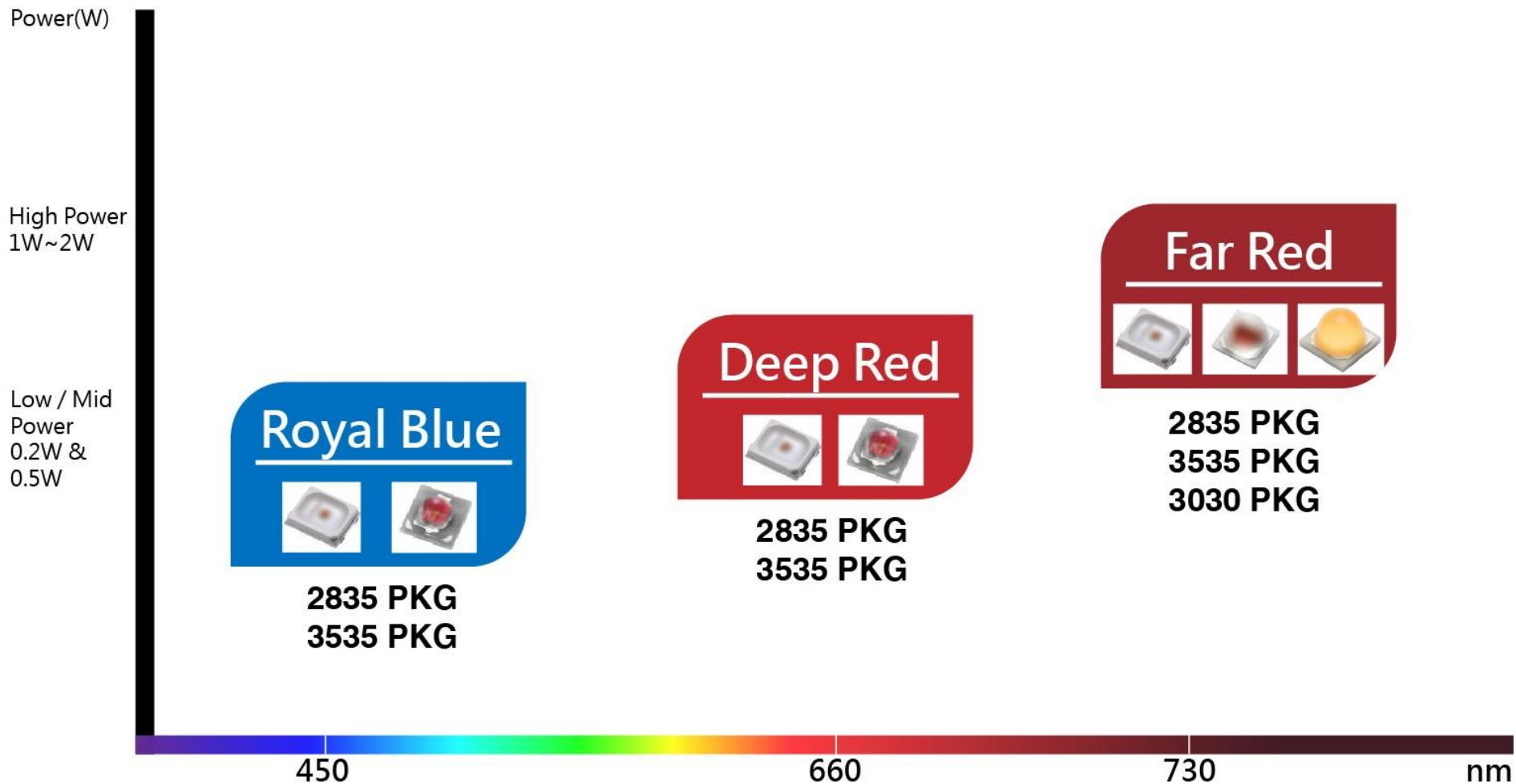
High Power

- ★ Professional Designs
- ★ Water purification
- ★ Space sterilization
- ★ Special applications



LCBU - Horticulture

Product Family

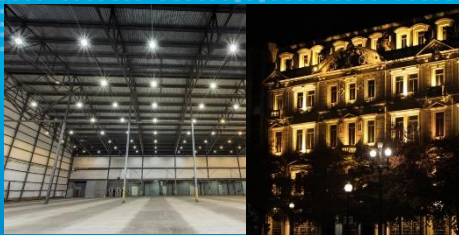


LCBU - Module

Product Family

DOB Application Modules

- High-end market applications
- Explosion proof lighting
- Outdoor lighting applications
- Special lighting applications



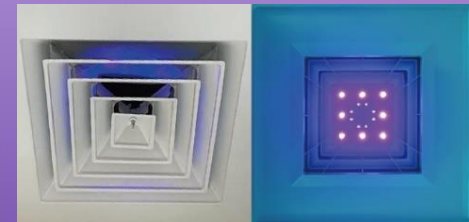
Sensor Application Modules

- IR sensor Module
- RGB Controller Module
- RGB+IC Module
- Light guide module



UV Module

- UVA Curing Module
- UVA air purifier module
- UVC sterilizer module



Semi-Power Device

Product Application



Semi-Power Device Product Family



	TO-252-2L	TO-263-2L	TO-220-2L	TO-247-2L	TO-247-3L
SiC SBD Package type					

	TO-263-7L	TO-220-3L	TO-220F-3L	TO-247-3L	DFN 5x6	DFN 8x8
SiC MOSFET Package type						

	DFN 5x6	DFN 8x8
GaN Package type		

	TO-220-3L	TO-220F-3L	TO-252-2L	DFN 5x6	DFN 8x8	DFN 3x3	SOP8
Si MOSFET Package type							